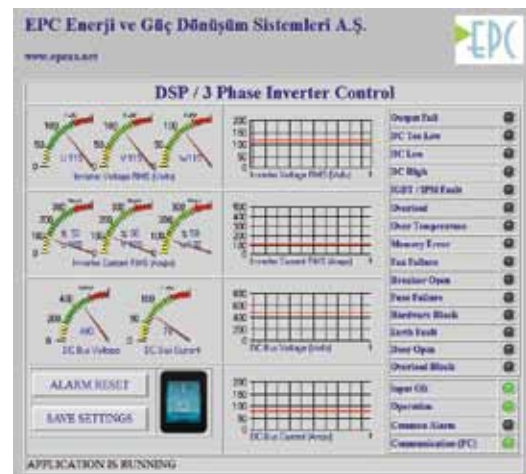


# INVERTA Series Static Power Inverters



## Advantages and Features

- ▶ DSP controlled 1 or 3 phase output
- ▶ Input and output breakers
- ▶ 1kVA / 200kVA power options
- ▶ Output isolated transformer
- ▶ 50Hz / 60Hz / 83 1/3 Hz / 400 Hz output frequency
- ▶ 50 Hz / 60 Hz adjustable frequency on the same device
- ▶ Perfect dynamic answer
- ▶ By-Pass input connection and uninterruptable by-pass option
- ▶ Soft start
- ▶ Compatible with inrush current devices (motors and compressors and etc...)
- ▶ Short circuit protection
- ▶ Parallel working and scaling (options)
- ▶ 2 x 16 character LCD display, monitoring the output, input voltage and current
- ▶ Line voltage low, high, output voltage high, low, over temperature and IGBT/Mosfet fault and alarms
- ▶ 2/4 relay output (2 when the communication board doesn't use)
- ▶ Through RS232 or RS485 Modbus communication (options).  
Through RS232 communication advanced PC control and monitoring program
- ▶ Monitoring and controlling the all operational parameters by means of the LCD display
- ▶ Automatic or manual start
- ▶ Language selection on LCD
- ▶ Log records up to 200
- ▶ Controlling with an external input
- ▶ LED's on the front panel
- ▶ Standing or rack-type cabinet
- ▶ Minimum IP20 protection class



Communication Interface

# INVERTA Series Static Power Inverters



## Industrial Grades Parallellable Inverters

### Technical data

Technical data common to the entire Inverta series Industrial range, single or three phase output(2.5-800Kva depend of the DC voltage)

<b>Input</b>		
Nominal input voltage	(Vdc)	24 / 48 / 110 / 220 / 300 / 400 / 600
Input voltage tolerance	(%)	± 30 (selectable input tolerance)
Maximum input voltage (transient state)	(%)	± 35
Soft start	(s)	10(adj) with current limiting rezistors
<b>Inverter Output</b>		
Nominal output voltage (single phase)		110,120 or 220,230,240 Vac (before chosing)
(three phase)		115/200, 220/380, 230/400, 240/415 + N (before ordering)
Nominal output frequency	(Hz)	50 / 60 [selectable]
Overload at cos phi = 0.8	(%)	125 (10 min) / 150 (1 min)
Short circuit capacity	(%)	250 (100 ms) / 175 (5 s)
Isolating transformer		Standard on the complete range
Voltage stability (for 100% load variation): Static	(%)	+ /- 1
Dynamic	(%)	+ /- 5 (recovery time < 20ms)
Frequency response	(Hz/s)	0.1
Frequency stability: with own oscillator	(%)	+ /- 0.05
with mains synchronisation	(%)	+ /- 5 [adjustable from 0.2 to 5]
Harmonic voltage distortion: with 100% linear load	(%)	< 3
with 100% non linear load	(%)	According to IEC 62040-1-2
Synchronisation voltage limits	(%)	+ /- 5
Output crest factor admissible		3/1
Load power factor		06 lag to 0.9 lead
<b>System Data</b>		
External protection degree		IP 20
Internal protection degree		IP 20
Cable entry		Bottom
Access		Front
System design life	(years)	20
<b>Environmental data</b>		
Operating temperature	(°C)	-5 to 45 (permanent operation)
Storage temperature	(°C)	-20 to + 70
Maximum relative humidity (non condensing)	(%)	< 95
Operating altitude		1000 m (without system derating)

NOTE: All specifications subject to change without notice. Consult ALLSAI's Technical Support Department for special applications. All names used above are registered trademarks of their respective owners.

### Rack mount type

24VDC INPUT ELECTRICAL SPECIFICATIONS	Power	1500 VA	2500 VA		
	DC Input Voltage	20-40 VDC	20-40 VDC		
	DC Input Current	75 A	121 A		
	Output Voltage	230Vac or 3*400 V+N	230Vac or 3*400 V+N		
	Output Frequency	6.5 Aac	10.8 Aac		
	Crest Factor	50/60Hz	50/60Hz		
	Surge Capacity for 5 seconds	2.5:1	2.5:1		
	Power Factor	0.75 (1125)	0.75 (1875)		
	Efficiency	> 84 %	> 85 %		
48VDC INPUT ELECTRICAL SPECIFICATIONS	Power	2000 VA	3000 VA	5000 VA	
	DC Input Voltage	40-80 VDC	40-80 VDC	40-80 VDC	
	DC Input Current	48 A	71 A	121 A	
	Output Voltage	230Vac or 3*230 Vac+N			
	Output Current	8.7 Aac/5Av	13.0 Aac/7.5A	21.7 Aac/12A	
	Output Frequency	50/60Hz	50/60Hz	50/60Hz	
	Crest Factor	3:1	2:1	2:1	
	Surge Capacity for 5 seconds	16 A	24 A	25 A	
	Power Factor	0.75 (1500)	0.75 (2250)	0.75 (3750)	
	Efficiency	> 86 %	> 86 %	> 86 %	
110VDC INPUT ELECTRICAL SPECIFICATIONS	Power	2000 VA	3000 VA	4000 VA	5000 VA
	DC Input Voltage	90-140 VDC	90-140 VDC	90-140 VDC	90-140 VDC
	DC Input Current	21 A	29 A	41 A	50 A
	Output Voltage	230Vac or 3*230 Vac+N			
	Output Current	8.7 Aac/5A	13.0 Aac/7.5A	17.4 Aac/10A	21.7 Aac/12A
	Output Frequency	50/60Hz	50/60Hz	50/60Hz	50/60Hz
	Crest Factor	3:1	3:1	3:1	3:1
	Surge Capacity for 5 seconds	39 A	50 A	80 A	100 A
	Power Factor	0.75 (1500)	0.75 (2250)	0.75 (3000)	0.75 (3750)
	Efficiency	> 86 %	> 90 %	> 90 %	> 91 %
GENERAL & ENVIRONMENTAL SPECIFICATIONS	Operation Temperature	0°C - 60°C			
	Storage Temperature	(-)20°C - 70°C			
	Relative Humidity	0-90 % non - condensing			
	Colling Method	Fan fanced			
	Protection Degree	IP 20			
	Display & Indicators	2*16 character LCD display			
	Alarms & Protections	Output OK & Input OK & Common Alarm Leds Output & Input Fuse DC Undervoltage & Overvoltage Overload Short Circuit & IPM Fault Over Temperature			

NOTE: All specifications subject to change without notice. Consult ALLSAI's Technical Support Department for special applications. All names used above are registered trademarks of their respective owners.